

ELECTRIC LONGLINE HAULER 910



Description

The electric longline hauler 910 is used for all types of longline (pelagic, bottom fishing) from Ø 1mm to Ø 8mm.

The traction system is made of a flexible band which presses efficiently the line without damaging it or turning it.

Integrated emergency stop system.

Waterproof, robust and stainless steel, it is adapted for the marine environment.

Technical information

Motor: 12V or 24V CC

Absorbed power: 192 W

Max consumption: 20 Ah

Max speed: 40 m/min

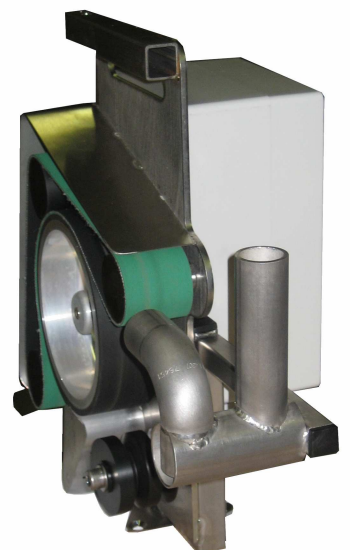
Traction: 25 kg

Fishing traction: 100 kg

Size: 53 x 31 x 19 cm

Weight: 13 kg

Rotation in 2 directions



Provided with:

- an installation kit
- a stainless steel guide line
- a fuse 20A