

ELECTRIC POTS HAULER 933



Description

Ideal for lifting your pots without any efforts.

The electric pots hauler 933 has a capstan head (outside Ø: 150mm, inside Ø 125mm).

Integrated emergency stop system.

Waterproof, robust and stainless steel, it is adapted to the marine environment.

Technical information

Motor: 12V or 24V CC

Absorbed power: 280 W

Max consumption: 20 Ah

Max speed: 37 m/min

Traction: 30 kg

Fishing traction: 150 kg

Size: 45 x 45 x 42 cm

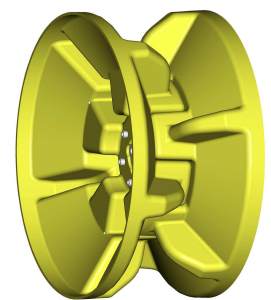
Weight: 17 kg

Option :

- Nets hauler composite drum (ref 921600).

Provided with:

- a stainless steel foot
- a male electric plug, waterproof
- a female electric socket, waterproof
- a transport handle
- a fuse 20A



Nets hauler drum
Ref : 921600